

Enhancing ecosystem services mapping for policy and decision making

Introduction and overview of ESMERALDA objectives and achievements in four project Strands



EU Horizon 2020 Coordination and Support Action



ES mapping & assessment strategies

for EU member states

'Flexible methodology'

for pan-European, national and regional ES mapping and assessment

Test this methodology

in case studies across European regions and themes

Mobilise relevant actors

from science, policy, practice and society involved in ES

Enable actors in EU member states

to fulfil their tasks of EU BD Strategy's Target 2 Action 5 /

Individual components are strongly interlinked, build upon each other and have been going on throughout the whole project duration.

ESMERALDA is integrating various project tasks and related outcomes around **four major project strands:**

A solid olive-green rectangular box containing the word "Networking" in a dark blue, sans-serif font.

Networking

A solid medium-green rectangular box containing the word "Policy" in a dark blue, sans-serif font.

Policy

A solid blue-grey rectangular box containing the word "Research" in a dark blue, sans-serif font.

Research

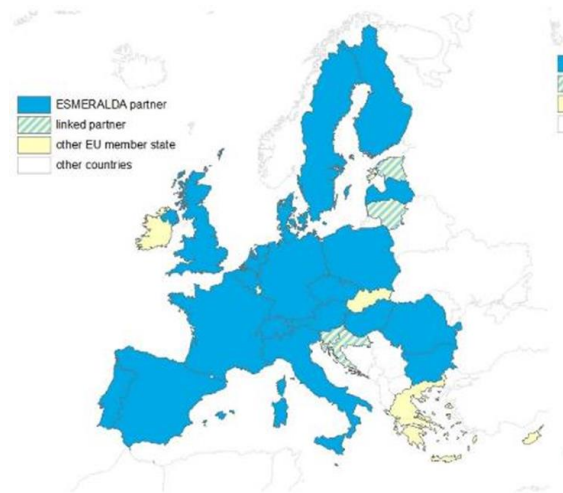
A solid purple rectangular box containing the word "Application" in a dark blue, sans-serif font.

Application

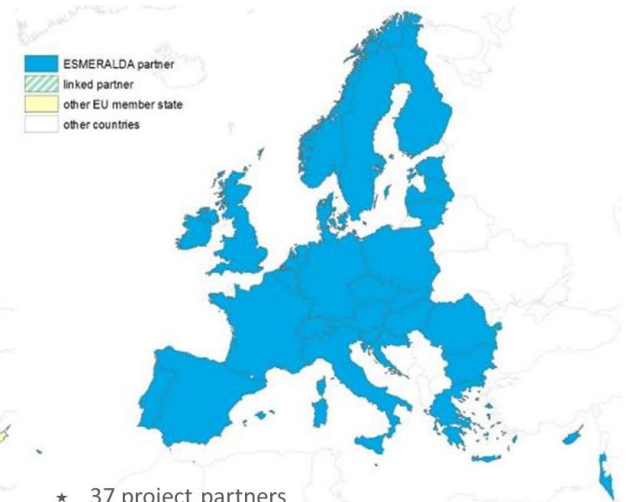
ESMERALDA is integrating various project tasks and related outcomes around **four major project strands:**

Networking

- ★ Networking went on through the whole project duration
- ★ ESMERALDA Consortium enlargement as one key achievement



- ★ 25 project partners
- ★ 19 EU member states
- ★ Switzerland



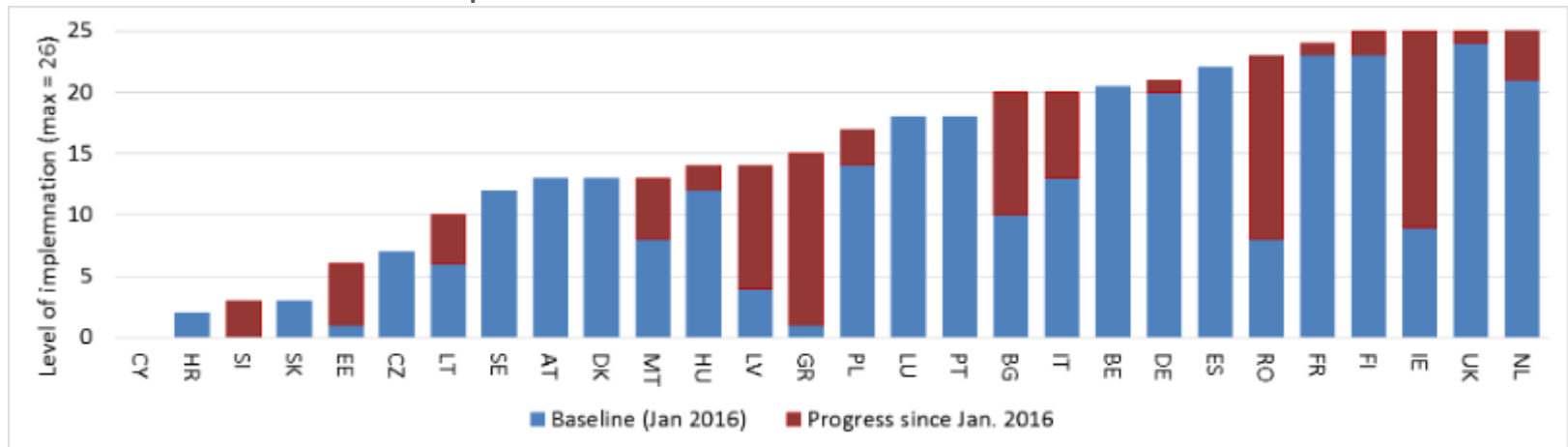
- ★ 37 project partners
- ★ all 28 EU member states
- ★ Switzerland, Norway and Israel
- + contacts to EU outermost regions and EU candidate states

- ★ Enlargement of ESMERALDA has enormously facilitated cross-European creation, testing and implementation of ES mapping and assessment strategies in all EU member states

ESMERALDA is integrating various project tasks and related outcomes around **four major project strands:**

Networking

- ★ Identification of relevant stakeholders
- ★ Regular systematic assessments of MAES implementation in each EU member state ('MAES barometer')
- ★ Identification of gaps and solutions for MAES implementation



ESMERALDA MAES barometer (03/2018; updated 2x per year before MAES WG meetings)

- ★ Regular **ESMERALDA Workshops** in EU Member States

ESMERALDA is integrating various project tasks and related outcomes around **four major project strands:**

Policy

- ★ Interest from policy-side in ESMERALDA topics is very high
- ★ ES are a very politically relevant topic
- ★ Ecosystem assessments usually start with a set of questions from policy, society, business or science
- ★ Mapping and assessment methods to answer these questions need to be flexible enough to be applied in all EU member states (including outermost regions, marine areas and specific biomes)

★ ESMERALDA identified sets of questions from policy, business and society:

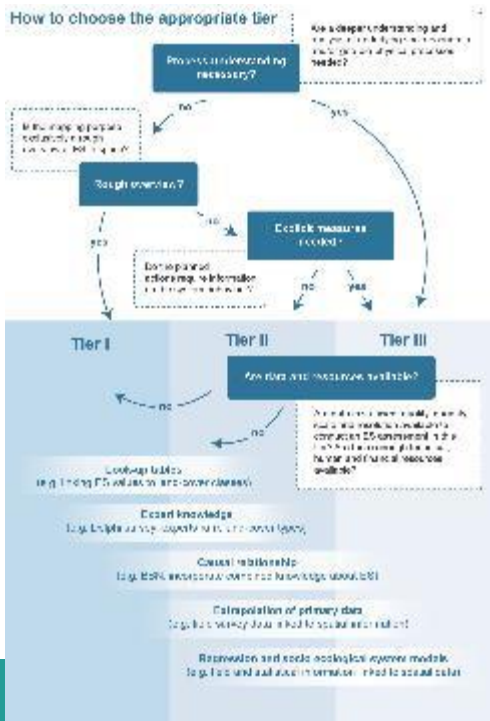


The screenshot shows the header of a research article on the One Ecosystem website. The header includes the journal name 'One Ecosystem: Ecology and Sustainability Data Journal' and navigation links for Home, Articles, About, About Pensoft, Books, and E-Books. The article title is 'Which questions drive the Mapping and Assessment of Ecosystems and their Services under Action 5 of the EU Biodiversity Strategy?' by Joachim Maes, Inge Liekens, and Claire Brown. The article ID is e25309 and the DOI is https://doi.org/10.3897/oneeco.3.e25309. The abstract is partially visible at the bottom.

ESMERALDA is integrating various project tasks and related outcomes around **four major project strands:**

Research

- ★ Identification, review, enhancing, integrating and interlinking existing ES mapping and assessment methods
- ★ Biophysical, socio-cultural and economic ES quantification, valuation and mapping techniques
- ★ Development of a tiered approach for ES mapping and assessment
- ★ **Guidance** on how social, biophysical and economic methods can be linked
- ★ Creation of methods **database/ESMERALDA MAES Methods Explorer**
- ★ Contributions for **CICES** update
- ★ Integrated Ecosystem Assessment Framework



ESMERALDA is integrating various project tasks and related outcomes around **four major project strands:**

Application

- ★ Systematic selection of **13 case studies**
- ★ Case studies from different European regions, relevant themes, specific biomes and regions and applications from businesses and the society
- ★ Representative for variety of existing conditions across the EU, geographical regions and biomes, variety of relevant for ES and themes
- ★ Detailed case study work during **ESMERALDA Workshops**

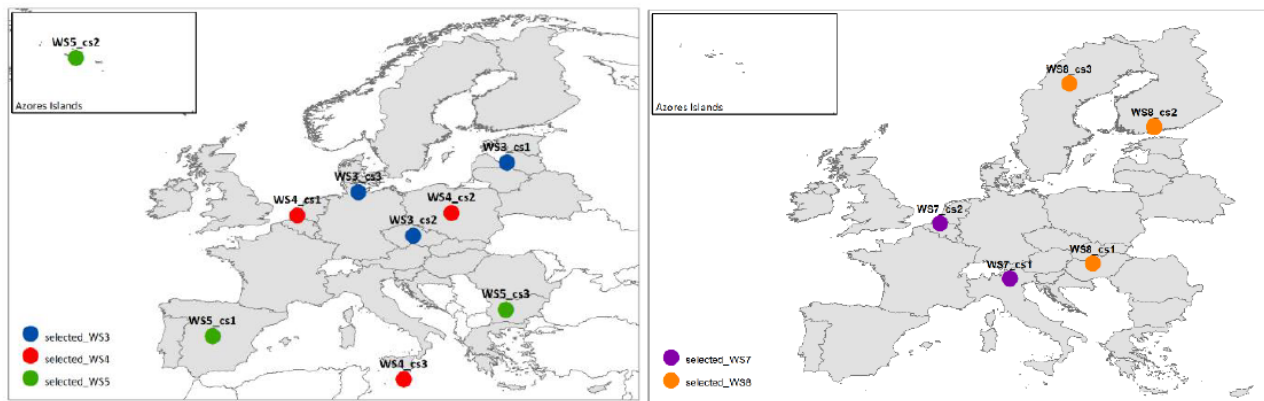


Figure 1.2: Map of the case studies selected for ESMERALDA Workshops 3, 4, and 5 (left) and 7 and 8 (right).

More detailed information on objectives and achievements in the four ESMERALDA project strands will be provided in the following session:

11:50 – 12:25
Chair: Leena
Kopperoinen

Networking

9:40 – 10:10
Chair: Joachim Maes

Policy

10:10 – 11:00
Chairs: Fernando Santos
Martin & Marion
Potschin-Young

Research

11:30 – 11:50
Chairs: Davide
Geneletti, Blal Adem
Esmail

Application

- 11:00 -11:30 Coffee break -